

Quick Start BBX 3000

March 2019



And perhaps
we'll see you soon!

info@dualinventive.com
www.dualinventive.com

ti DualInventive
Ubiquitous Rail



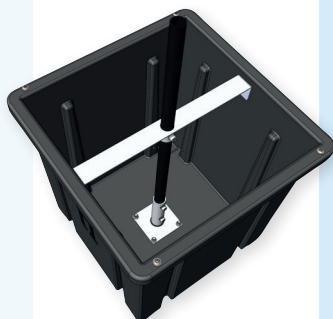
Before you start!

The BBX 3000 is designed to support a solar panel which can be connected to the external battery used with the ZKL 3000 RC.

Install the BBX 3000 no closer than 1.7 m to the track, in a position of safety. Make sure it is placed on a hard, flat surface. The BBX 3000 does not require foundations and is designed to sit on the ground.

1

- Install the pole into the box, tighten the bottom side of the pole with the two (already inserted) screws.
- Tighten the bar to the box (both sides) using two m8x25 screws and tighten the pole using the (already inserted) screw.



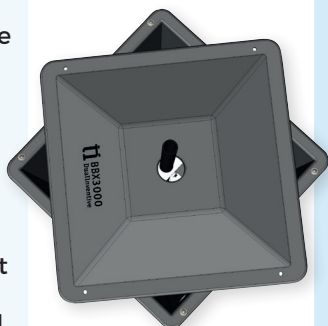
2

- Fill the BBX 3000 with a suitable bagged filler material of at least 80 kg.
- If possible, place the external battery on top of the ballast that is inside the box. Otherwise, place it outside the box.
- If applicable, place the external battery cable through the hole on the side of the box.



3

- If the external battery is placed inside the box, place the cover of the BBX 3000 on the top and rotate it 45 degrees to one side.
- Pull the connector of the solar panel through the gap and connect it to the external battery.
- If the external battery is left outside the box, connect the cable of the solar panel to the external battery.



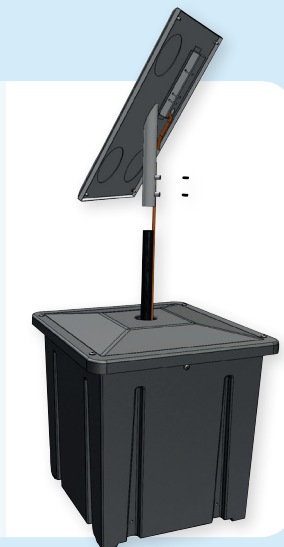
4

- Close the box by securing the lid using 4 m8x25 screws and locknuts.



5

- Mount the solar panel on the top of the pole.



6

- Ensure that the solar panel is not obscured or installed in the shade.
- Rotate the panel on the pole to make sure that it is facing towards the sun (in either a South or Westerly direction where possible).
- Tighten the solar panel using the two (already inserted) screws.

