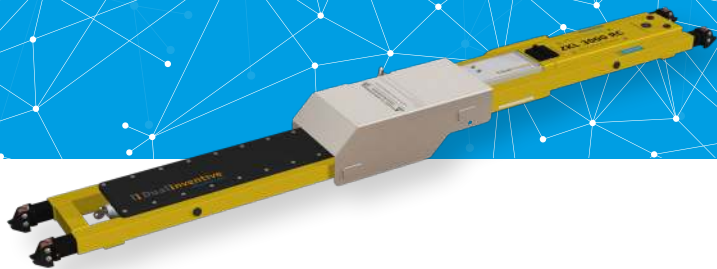


# Quick Start ZKL 3000 RC

MTinfo 3000 version 5

February 2020



**ti DualInventive**  
Ubiquitous Rail



## Before you start!

### \* What you will need!

- ZKL 3000 RC
- Manual and ZKL 3000 RC accessories
- Certificate ZKL 3000 RC
- MTinfo 3000 app

## Inhoud

### 1 Function test before you start

### 2 Installation in the track

### 3 Operating the MTinfo 3000 app

A Logging in

B Selecting a project

C Switching on

D Switching off

### 4 Icons, statuses and errors

A Icons

B Statuses

C Errors

# 1

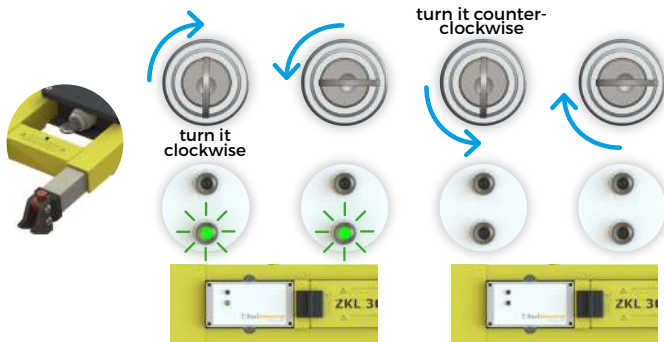
## Function test before you start

### A Install both batteries



**!** Place the test tool and install both batteries to perform the function test.

### B Operate the key switch as follows



**!** Make sure the green LED blinks twice per second during the first two steps!

### C Check the status of the ZKL 3000 RC in the MTinfo 3000 app or on [mtinfo3000.com](http://mtinfo3000.com)

## Installation in the track

- A** Place the key switch in the ON position whilst installing the ZKL and pay attention to the main battery cable.



turn it  
clockwise



- B** Place the ZKL 3000 RC in the track



- !** Make sure the distance between the underside of the ZKL 3000 RC and any ballast is at least 30mm.

- C** Install the locking clamp



- D** Perform the function test again, see steps 1B and 1C

## Operating the MTinfo 3000 app

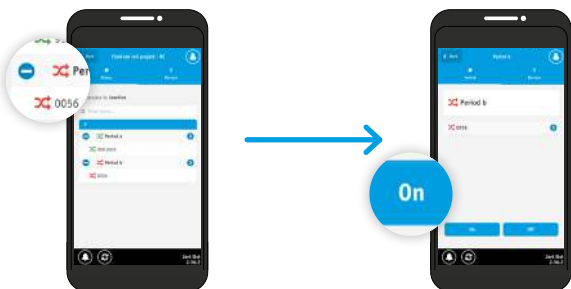
### A Logging in



### B Selecting a project

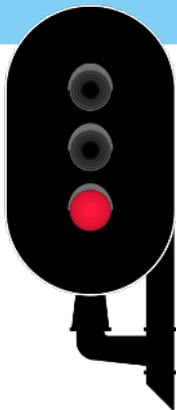
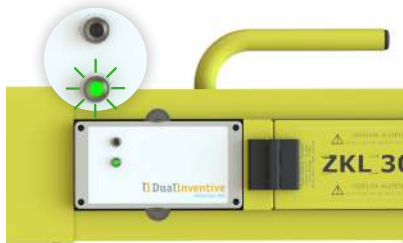
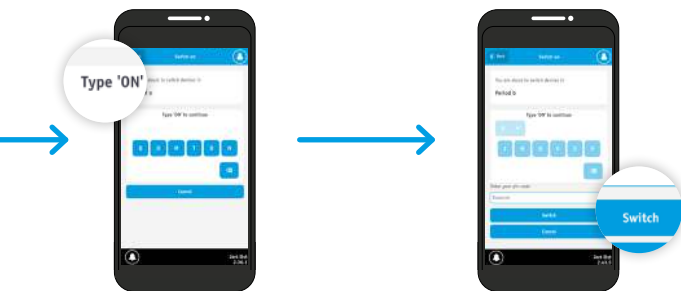


## Switching on



## Successfully switched on

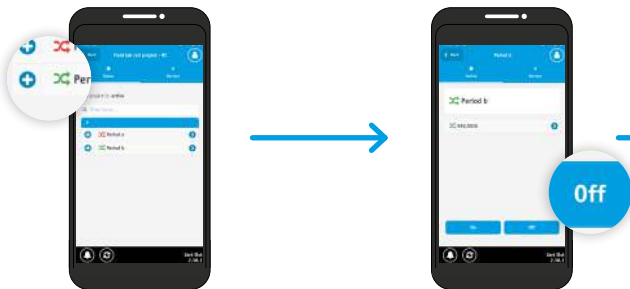




 The green LED will blink twice per second.

## Operating the MTinfo 3000 app

### D Switching off



### Successfully switched off



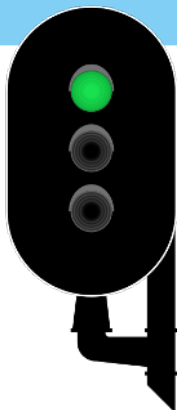




Type 'OFF'





Switch



## Icons, statuses and errors

### A Icons

Icon	Explanation
	View the notifications that have been sent by MTinfo 3000
	Refresh the screen

### B Statuses

[ID]	[SW]	[DET]	Explanation
110.0199	ON	OK	Device has been switched on and is creating a proper short.
110.0199	ON	NOK	Device has been switched on and is NOT creating a proper short.
110.0199	OFF	NOK	Device has been switched off and is therefore not creating a proper short.
110.0199	-	-	Device is not available.

## Alerts

Warning	Explanation and solution
ZKL 3000 RC offline in real-time status	Try again, check the batteries and if needed use the override key switch.
ZKL 3000 RC battery is (almost) empty	Replace the battery and try switching again, also check the battery cable if required.
Override key is not in setting OPERATIONAL	ZKL 3000 RC has been overruled with the override key. It is not possible to remotely operate this ZKL 3000 RC. Rotate override key to "OPERATIONAL" to allow remote switching.
ZKL 3000 RC has been switched on, but there is no short circuit (DET NOK)	ZKL 3000 RC short circuit has not been detected (DET NOK). Please attempt to reseat the ZKL 3000 RC in the track and check again.
Short circuit already present	When switching, a short circuit was already detected in the section. The ZKL 3000 RC cannot guarantee it is creating the short circuit. Check if the section is clear, and then try again. Always be sure of a proper short circuit (in an empty section).
No ZKL 3000 RC in period / no access to period	Consult the project lead.

**Ensure your own safety when in a railway environment.  
Act according to the national regulations.**



**After use, remove all batteries.  
Charge before storing the batteries.**



And perhaps we'll  
see you soon!

[info@dualinventive.com](mailto:info@dualinventive.com)  
[www.dualinventive.com](http://www.dualinventive.com)